

FEATURES



USED BY:

- SHIPYARDS
- STEEL PLANTS
- MILITARY
- MANUFACTURERS OF:
TRAILERS
ENGINES
ELECTRICAL APPLIANCES
CUSTOM VEHICLES
MACHINERY

IDEAL FOR:

- MANUAL PERSONALIZATION OF METAL PLATES IN ALL ENVIRONMENTS

NO POWER SUPPLY REQUIRED

TOTALLY PORTABLE



MANUAL SERIES

M10 HE



EMBOSSING OR DEBOSSING
PORTABLE, ROBUST AND COMPACT FOR
DOG TAG AND METAL PLATE MARKING

Embossing type set

Blocco 5 mm



Simplex 2



Blocco USA

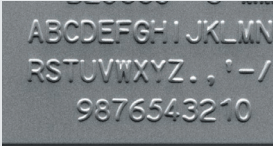


Debossing type set

Block USA



TECHNICAL FEATURES



PLATE

plate dimensions

width: 0.47 - 3.74 in / 12- 95 mm
height: 0.47 - 2.95 in / 12 - 75 mm
thickness: 0.0157 - 0.0354 in / 0.4 - 0.9 mm

plate materials feed

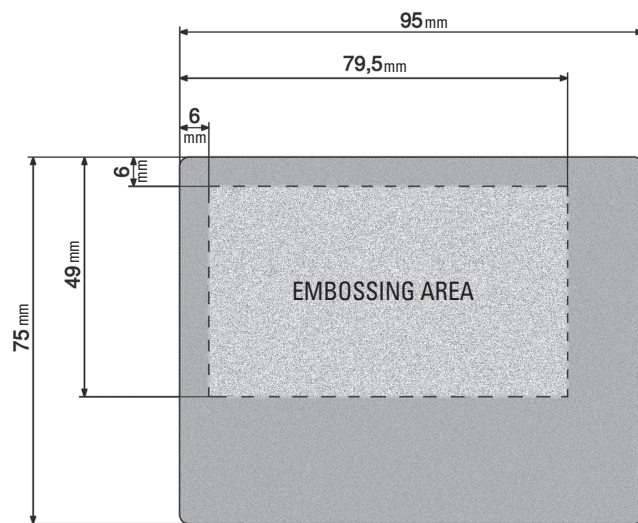
stainless steel, carbon steel, aluminum, copper, brass
manual

EMBOSSING

technology drum capacity type set

Embossing or debossing
60 slots
many characters configurations available:
Embossing: Simplex 2, OCRB1, Blocco USA, Blocco 5 mm - others available on request
Debossing: Elite Dog Tag

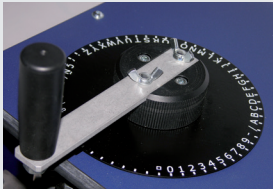
embossing area*



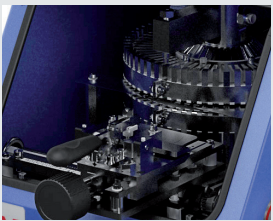
*Measurements are taken from the base and left side of the character.

HARDWARE

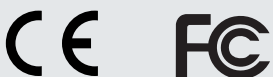
dimensions (WxDxH) 9.8 x 17.3 x 10.2 in / 250 x 440 x 260 mm
weight 28 lbs / 13 kg



Character selection ring



60 characters capacity drum



Portable, yet robust and compact. The **M10 HE** is entirely manual and can be used anytime, anywhere.

No power supply required.

With its 60 characters capacity drum, the automatic spacing function and the whole plate free format, the **M10 HE** is designed to meet a wide range of requirements and is ideal for the personalization of low to medium tag volumes.

cim-usa.com

