

## FEATURES

STANDARD



## USED BY:

- US MILITARY
  - Army
  - Marine Corps
  - Navy
  - Air Force
  - Coast Guard

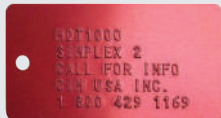
## IDEAL FOR:

- DOG TAGS
- MEDICAL ALERT TAGS
- CABLE/HOSE TAGS
- SERIAL NUMBER TAGS
- SHIPBUILDING ID TAGS
- VALVE/PIPE TAGS
- SUBSEA ID

### Dog Tags



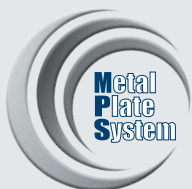
### Medic Alert Tags



## SOFTWARE



"NAVSEA regulations specifically state that NAVSEA Cable tags must be embossed with NAVSEA specified # 488 5MM oversize type under NAVSEA drawing # 701661"



# METAL EMBOSSEYER SERIES

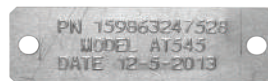
# MDT 1000



LCD display and front control panel for technical diagnostics

A new compact, auto-feed, high speed metal tag embosser based on durable and proven technology. Flexible and specifically designed for military tagging applications.

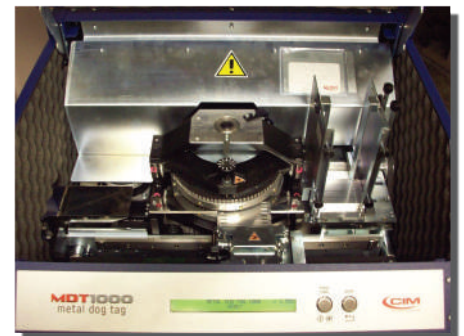
The MDT1000 has the built-in qualities that only a CIM metal tag embosser can offer. CIM is the #1 supplier of metal tag embossing solutions to the military



Serial Number Tag

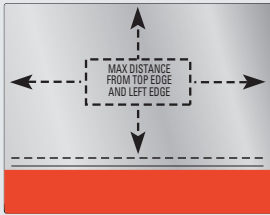


Cable Tag

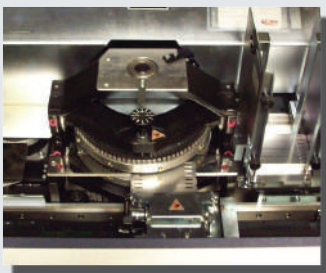


# TECHNICAL FEATURES

## EMBOSSING AREA



- Embossing area
- Bottom edge / 0.157 in / 4 mm



Heavy duty : Long Life  
Embossing Module

## PLATE & FEEDER

**dimensions** width: 1.18 - 3.50 in  
height: 0.83 - 2.50 in

**thickness** 0.0157 - 0.0354 in

**materials** stainless steel - .015in  
aluminium - .015in - .035in

**Input hopper** 400 Tags

**output hopper** External Collection Tray (FILO)

## STAMPING

**technology** Embossing

**drum capacity** 60 slots

**type set** Simplex 2, Blocco USA and Blocco 5mm

**embossing**

Simplex 2



Blocco USA



Blocco 5mm



**performance** 235 tags per hour based on 45 characters

## COMMUNICATION INTERFACE & SOFTWARE

**communication interface** Universal Serial Bus (USB)

**operating systems** Windows : Vista/7/8

**application software** Blade Software

**protocol** CIM, Xon-Xoff, MultiEmbosser, Stored Format default, Stored Format Select

**LCD Edit** Yes

**data format** 50 fields of 42 characters each (Variable, Fixed data, Counters, etc.)

## HARDWARE

**power supply** 100 - 117 - 220 - 230 or 240 Volts - 50 or 60 Hz

**power consumption** 800 Watt max

**operating environment** temperature: 41 - 104 °F / 5 - 40 °C  
relative humidity: 30% - 90% non condensing

**dimensions (WxDxH)** 28.5" (includes the FILO tray) x 29.25" x 16.5" (with legs)

**weight** MDT1000 180 lbs

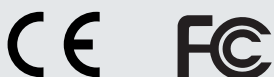
## VARIOUS

**display LCD** 2 lines of 40 characters, LCD display for diagnostics and offline operation when using the bundled PC keyboard

**FLASH memory technology** for easy firmware upgrade

**Designed Specifically for the Military:** The **MDT1000** is a rugged, reliable and cost effective solution for the production of dog tags, medic alert tags, cable/hose tags, valve/pipe tags, and more. Built for the toughest environments and built to last, the **MDT1000** is the best choice today for the various needs of every branch of the U.S. Military.

For a complete selection of metal plates and tags including cable tags, serial number tags, and valve tags please visit - [www.metalplatesandtags.com](http://www.metalplatesandtags.com)



[cim-usa.com](http://cim-usa.com)



Data subject to change without notice. All started trademarks belong to their respective owners. M1000-2000\_ENG\_USA Rev. 01-01/14